

Bicycle Therapeutics Announces £20M (\$32M) Million Financing for Drug Development

Tue Oct 14, 2014 3:17pm EDT

* Reuters is not responsible for the content in this press release.

0 COMMENTS |

Bicycle Therapeutics Announces £20M (\$32M) Million Financing for Drug Development

Bicycle Therapeutics, a next generation biotherapeutics company developing first-in-class bicyclic peptides, today announced that it had secured an equity financing of £20 (\$32M) million for the clinical development of therapeutic bicycle drug candidates in oncology. The existing investor syndicate, Atlas Venture, Novartis Venture Fund, SR One, SV Life Sciences and Astellas Venture Management participated in the round.

Bicycle has used its proprietary bicyclic peptide technology that enables it to discover a new class of drug candidates, which have similar selectivity and potency to antibodies but are 100-fold smaller and are manufactured using simple, economic chemical synthesis. This financing will support the clinical development of bicycle-drug conjugates (BDCs) that are highly selective to tumour-specific targets, with sub-nanomolar affinities. Preclinical models show that these BDCs extravasate and penetrate tissues much more rapidly and efficiently than antibodies, effecting rapid cell killing through the tumour mass and fast clearance. This results in effective tumour lysis with minimal systemic exposure.

Bicycle technology has broad applicability in oncology, respiratory, inflammatory and ophthalmology disease, as agonists, antagonists or for delivering payloads. The company's projects in BDCs for oncology will be leveraged by pharma partnerships addressing targets nominated by partners, where the rapidity of lead discovery and optimisation enables drug candidate selection in months. The first partnership, with ThromboGenics, is developing bicyclic peptide drug candidates to a specific ophthalmology target, for the treatment of diseases such as diabetic macular edema.

Andrew Sandham, Chairman of Bicycle, said, "This second round financing enables us to advance our BDC candidates to clinical development in cancer indications. We also have the capacity to work collaboratively with pharma partners on other targets and indications in many diseases."

Rolf Günther, CEO, added, "Bicycle technology was invented by our founders, Sir Gregory Winter and Professor Christian Heinis. We have developed the platform for rapid discovery and optimisation of drug candidates, and are delighted that we are now able to demonstrate clinical utility of this exciting new class of molecules."

- 1 [Facing U.S. safety probe, Honda expands air bag recall](#)
- 2 [Hollande popularity plumbs new low in mid-term French poll](#)
- 3 [Japanese woman abducted by North Korea died of drug overdose: report](#)
- 4 [Boehner touts bills to repeal Obamacare, build Keystone](#)
- 5 [Who shot bin Laden? Former Navy SEALs make rival claims | VIDEO](#)

Follow Reuters

Facebook Twitter RSS YouTube

- RECOMMENDED VIDEO**
- [Lockheed F-35 fighter jets make smooth landi...](#)
 - [Botched jobs in South Korea's plastic surgery](#)
 - [Lava creeps further toward Hawaii village](#)
 - [NATO commander says Russian air incursions ...](#)

About Bicycle Therapeutics

Bicycle Therapeutics has developed a proprietary bicyclic peptide based technology that enables the discovery of a new class of drug candidates ('bicycles') providing antibody-like affinity and selectivity in a much smaller chemically synthesized molecule. Bicycle peptides are short peptide sequences constrained by a chemical scaffold core to form a structure with two loops of amino acids. This structure confers high stability and high affinity binding to targets. The company is applying the technology to drug discovery projects in areas including oncology and ophthalmology and additional therapeutic areas through selected collaborative discovery partnerships with pharmaceutical companies.

Bicycle's technology is based on the work performed at the MRC Laboratory of Molecular Biology in Cambridge by the scientific founders of the company, Professor Christian Heinis and Sir Gregory Winter. The company is funded by Atlas Venture, [Novartis](#) Venture Fund, SVLS, SR One and Astellas Venture Management. For more information visit www.bicycletherapeutics.com.

Bicycle Therapeutics Limited
 Rolf Günther, +44 (0)1223 497415
rolf.guenther@bicycletherapeutics.com
<http://www.bicycletherapeutics.com>

More From Reuters

- [Acid attacks in Iran vigilantism](#) | 5 Nov
- [Has Islamic State convened a convention of all the world's crazies and really go...](#) | 4 Nov
- [Oil falls. So does the Russian stock market](#) | 5 Nov
- [Lava: A painfully slow death](#) | 31 Oct
- [Delhi gang rape verdict: Reactions from people on the street](#) | 3 Nov

Latest from My Wire

Login or register

Sponsored Financial Content

- [UK commercial property's future prospects](#)
- [How Londoners are commuting with contactless wearable technology](#) *Barclaycard*
- [Multi-currency banking and fee-free international money transfers.](#) *Lloyds Bank*
- [Value driven investments in well known and small UK companies](#) *Henderson*
- [How has multi-asset investment evolved?](#) *JP Morgan*

Sponsored Financial Content

- [Value driven investments in well known and small UK companies](#) *Henderson*
- [Multi-currency banking and fee-free international money transfers.](#) *Lloyds Bank*
- [How can wearable tech streamline your morning commute?](#) *Barclaycard*
- [UK commercial property's future prospects](#) *Henderson*
- [How has multi-asset investment evolved?](#) *JP Morgan*



Make Money Using This Little Trick!
 OptioNavigator



This crazy loophole allows to shop the New iPad for under £30
 Swoggi



UK public Snaps Up Bargains Using 'Bizarre' Online Trick
 MadBid.com

Sponsored Links

From The Web

Sponsored Links by Taboola



This crazy loophole allows to shop the Ne...
 Swoggi



139 Old Norse Words That Invaded The Eng...
 Babbel



R.I.P. to the HR Department
 Business Value Exchange



Do These 2 Things or Watch Your Best Emp...
 Globoforce



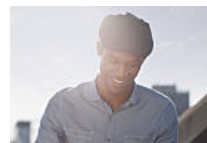
NASA Hides This a Truth 60 Years
 Cool Gallery



The 4 Tricks that Steve Jobs Used to Give Gr...
 Prezi



The Truth About The Honda Accord
 CarBuyer



It Is Possible To Learn A Language In 180 Days
 Rosetta Stone

Comments (0)

This discussion is now closed. We welcome comments on our articles for a limited period after their publication.

Related Ad Topics

- | | |
|---|--|
| 1. Best Rated SUVs | 6. Top 10 Universities |
| 2. Top 10 Luxury Cars | 7. How to Start an Online Business |
| 3. Best Cars to Own | 8. Top Rated Vacuum Cleaners |
| 4. Top 10 Refrigerators | 9. Diet Pills That Work |
| 5. Fuel-Efficient SUVs | 10. Cheap Cellphone Plans |

[Back to top](#)

- Reuters.com** | [Business](#) | [Markets](#) | [World](#) | [Politics](#) | [Technology](#) | [Opinion](#) | [Money](#) | [Pictures](#) | [Videos](#) | [Site Index](#)
- More from Reuters** | [Reuters News Agency](#) | [Brand Attribution Guidelines](#) | [Delivery Options](#)
- Support & Contact** | [Support](#) | [Corrections](#)
- Account Information** | [Register](#) | [Sign In](#)
- Connect with Reuters** | [Twitter](#) | [Facebook](#) | [LinkedIn](#) | [RSS](#) | [Podcast](#) | [Newsletters](#) | [Mobile](#)
- About** | [Privacy Policy](#) | [Terms of Use](#) | [Advertise With Us](#) | [AdChoices](#) | [Copyright](#)

Thomson Reuters is the world's leading source of intelligent information for businesses and professionals.

[Thomsonreuters.com](#)

[About Thomson Reuters](#)

[Investor Relations](#)

[Careers](#)

[Contact Us](#)

Our Flagship financial information platform incorporating Reuters Insider

An ultra-low latency infrastructure for electronic trading and data distribution

A connected approach to governance, risk and compliance

Our next generation legal research platform

Our global tax workstation

Thomson Reuters is the world's largest international multimedia news agency, providing investing news, world news, business news, technology news, headline news, small business news, news alerts, personal finance, stock market, and mutual funds information available on Reuters.com, video, mobile, and interactive television platforms. Thomson Reuters journalists are subject to an Editorial Handbook which requires fair presentation and disclosure of relevant interests.

NYSE and AMEX quotes delayed by at least 20 minutes. Nasdaq delayed by at least 15 minutes. For a complete list of exchanges and delays, please click here.