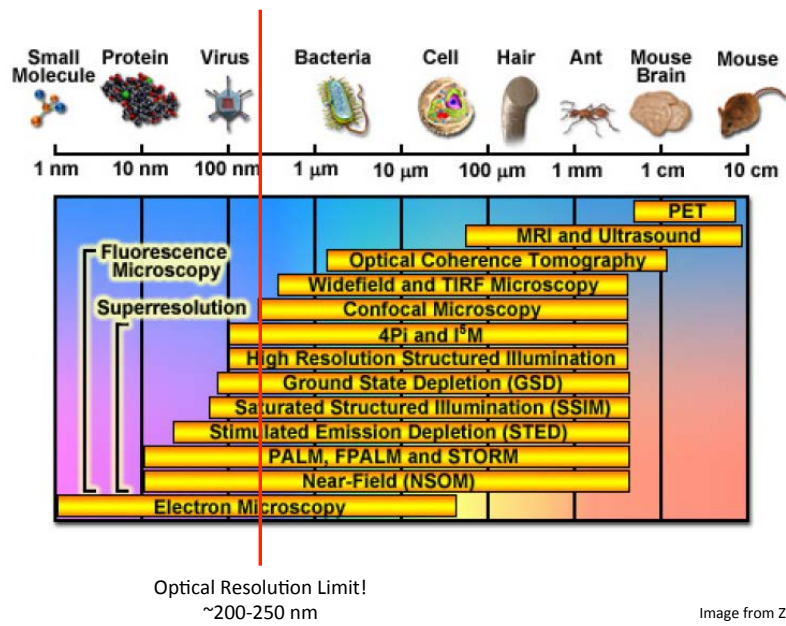
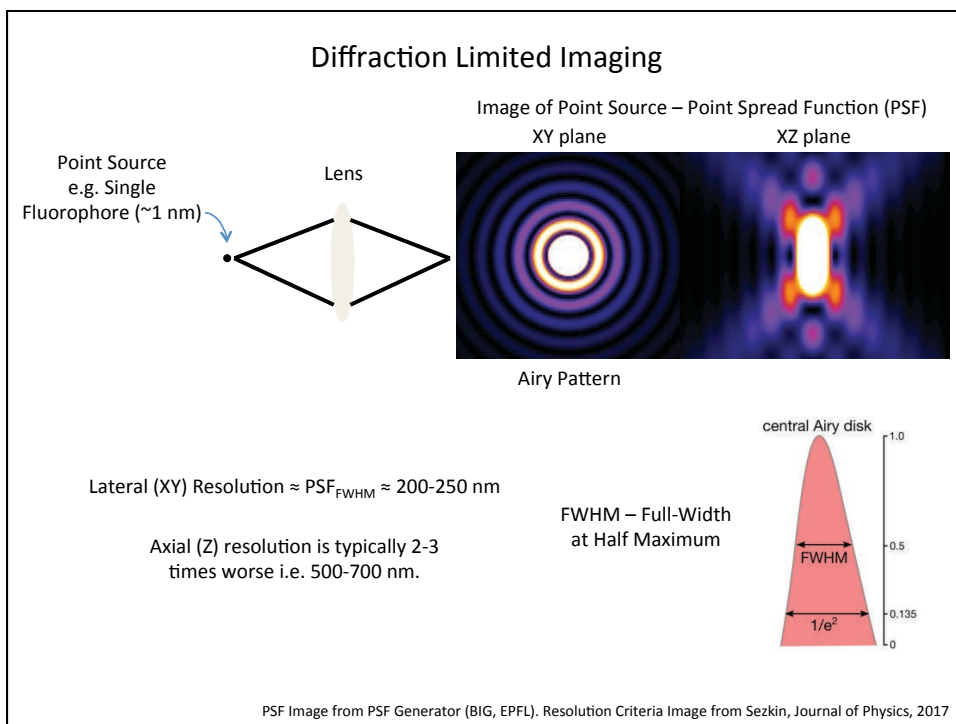
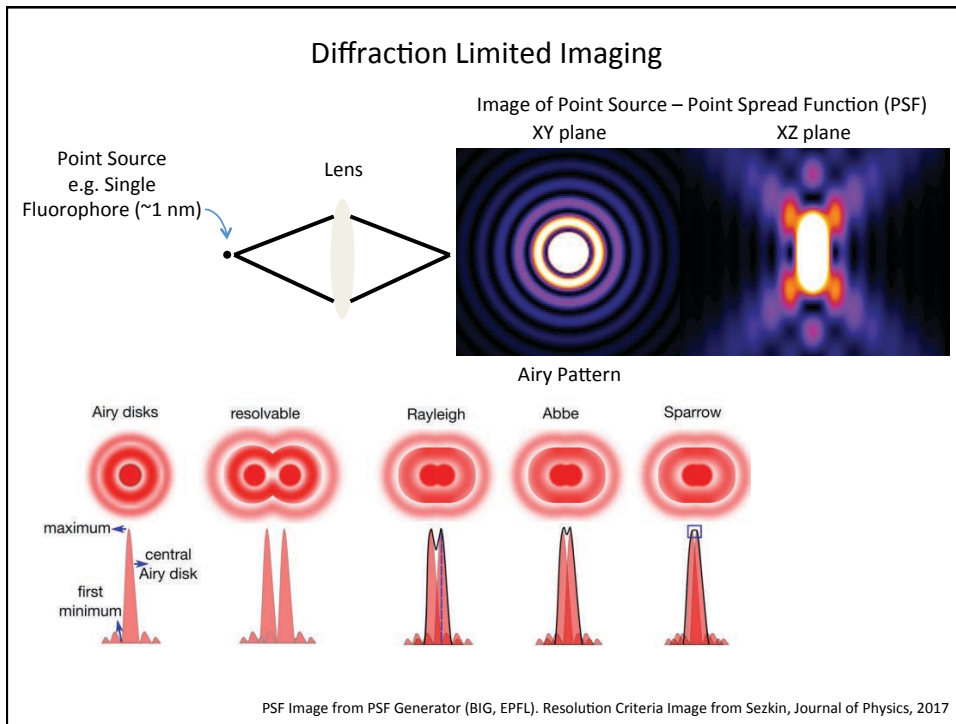


# Super-Resolution Microscopy

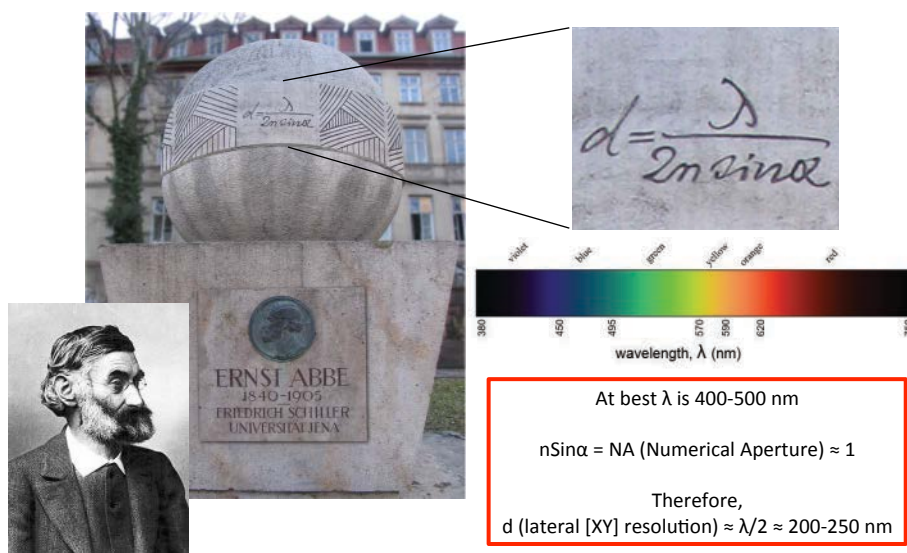
Jonathan Howe

## Spatial Resolution of Biological Imaging Techniques





## Lateral (XY) Resolution Limit

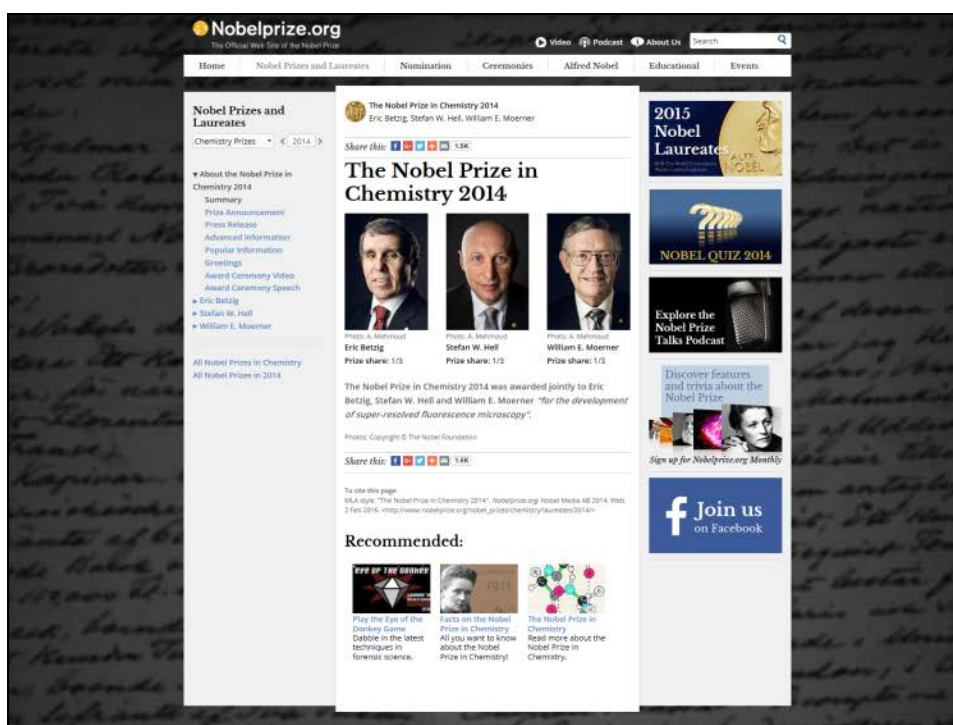


At best  $\lambda$  is 400-500 nm

$n \sin \alpha = \text{NA (Numerical Aperture)} \approx 1$

Therefore,  
d (lateral [XY] resolution)  $\approx \lambda/2 \approx 200\text{-}250$  nm

Images from Wikipedia, University of Texas Website and Hell, Nature Methods, 2009.



**Nobelprize.org**  
The Official Web Site of the Nobel Prizes

Home Nobel Prizes and Laureates Nominations Ceremonies Alfred Nobel Educational Events

**Nobel Prizes and Laureates**  
Chemistry Prizes < 2014 >

**The Nobel Prize in Chemistry 2014**  
Eric Betzig, Stefan W. Hell, William E. Moerner

Share this: [Facebook](#) [Twitter](#) [LinkedIn](#) [StumbleUpon](#)

**The Nobel Prize in Chemistry 2014**

**Eric Betzig**  
Photo: A. Mahrwald  
Prize share: 1/3

**Stefan W. Hell**  
Photo: A. Mahrwald  
Prize share: 1/3

**William E. Moerner**  
Photo: A. Mahrwald  
Prize share: 1/3

The Nobel Prize in Chemistry 2014 was awarded jointly to Eric Betzig, Stefan W. Hell and William E. Moerner "for the development of super-resolved fluorescence microscopy".

Photos: Copyright © The Nobel Foundation

Share this: [Facebook](#) [Twitter](#) [LinkedIn](#) [StumbleUpon](#)

To cite this page:  
MLA style: "The Nobel Prize in Chemistry 2014". Nobelprize.org. Nobel Media AB 2014. Web. 2 Feb 2016. <http://www.nobelprize.org/nobel\_prizes/chemistry/laureates/2014/>

**Recommended:**

**Eye of the Octopus**  
Play the Eye of the Octopus Game. Dabble in the latest techniques in forensic science.

**Facts on the Nobel Prize in Chemistry**  
All you want to know about the Nobel Prize in Chemistry!

**The Nobel Prize in Chemistry**  
Read more about the Nobel Prize in Chemistry.

**2015 Nobel Laureates**

**NOBEL QUIZ 2014**

**Explore the Nobel Prize Talks Podcast**

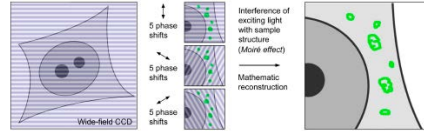
Discover features and trivia about the Nobel Prize.

Sign up for Nobelprize.org Monthly

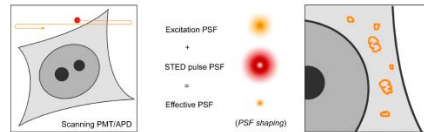
**Join us on Facebook**

## Super-resolution Microscopy Techniques

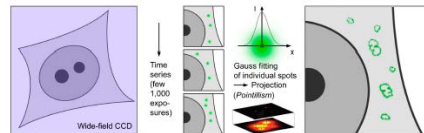
- Structured Illumination Microscopy (SIM). Sample is excited with patterned illumination, which highlights different objects at different times.



- Stimulated Emission Depletion (STED) Microscopy. Targeted PSF engineering effectively shrinks illumination spot.



- Localisation Microscopy (LM) e.g. PALM and STORM. Fluorophores are randomly activated, imaged and bleached. Localisation of the fluorophores builds up a super-resolution image over time.

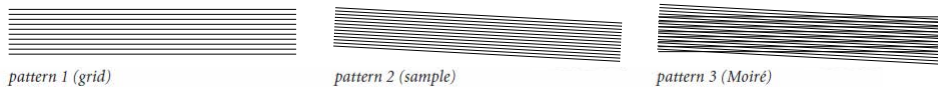
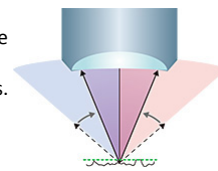


Schermelleh *et al.*, JCB, 2010.

## Structured Illumination Microscopy (SIM)

$$d \approx \lambda/4NA$$

- The patterned illumination light and high frequency structures in the sample interfere with each other to form a third pattern (moiré fringes) that have a lower spatial frequency and can therefore be captured by the objective lens.
- The interdependency of the 3 patterns is used to compute the unknown super-resolution information in the sample.



- Acquiring raw images with patterned excitation at 3 (2D) or 5 (3D) phases and 3-5 orientations and processing all acquired images using computer algorithms, a super-resolution image can be generated (2-fold improvement in XYZ resolution). 9-25 images per Z plane - bleaching!



XY resolution: 100-130 nm  
Z resolution: 250-350 nm

Images from Nikon website.

## Zeiss Elyra S.1

- 4 lasers (50 mW 405 nm, 100 mW 488 nm, 100 mW 561 nm, 150 mW 640 nm).
- 100x 1.46 NA oil objective.
- 63x 1.4 NA oil objective.
- 60x 1.2 NA water objective.
- Pco-edge sCMOS camera capable of 100 fps.
- 5 gratings (23  $\mu\text{m}$ , 28  $\mu\text{m}$ , 34  $\mu\text{m}$ , 42  $\mu\text{m}$  and 51  $\mu\text{m}$ ).
- Up to 4 colours in one sample is realistically possible.
- Resolution improvement is limited by wavelength of label. Blue/green dyes better than red/far red – Also true for diffraction-limited imaging!



## Zeiss Elyra S.1

- 4 lasers (50 mW 405 nm, 100 mW 488 nm, 100 mW 561 nm, 150 mW 640 nm).
- 100x 1.46 NA oil objective.
- 63x 1.4 NA oil objective.
- 60x 1.2 NA water objective.
- Pco-edge sCMOS camera capable of 100 fps.
- 5 gratings (23  $\mu\text{m}$ , 28  $\mu\text{m}$ , 34  $\mu\text{m}$ , 42  $\mu\text{m}$  and 51  $\mu\text{m}$ ).
- Up to 4 colours in one sample is realistically possible.
- Resolution improvement is limited by wavelength of label. Blue/green dyes better than red/far red – Also true for diffraction-limited imaging!

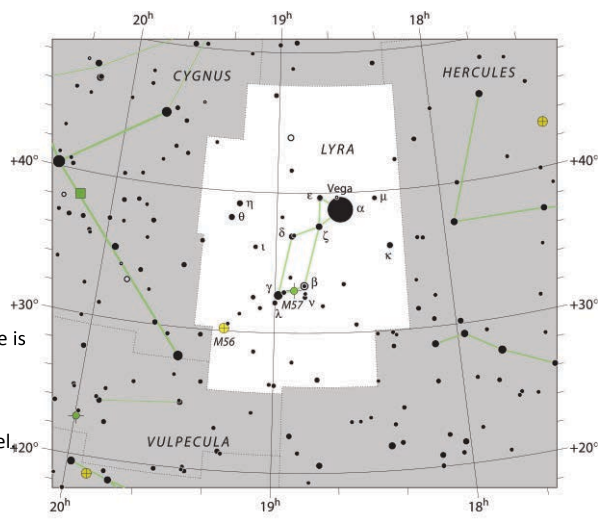
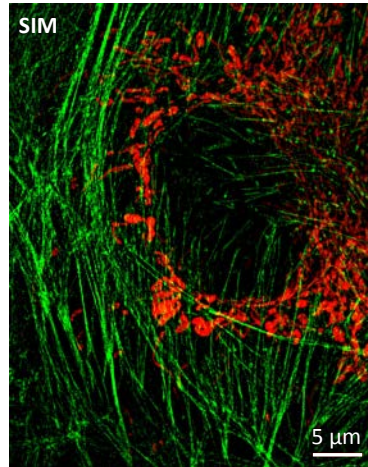
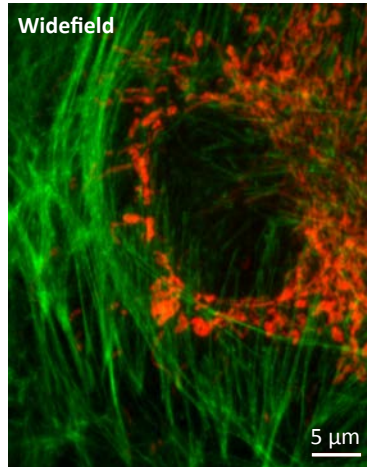


Image from Wikipedia.

### 2-Colour SIM Example: Actin and Mitochondria

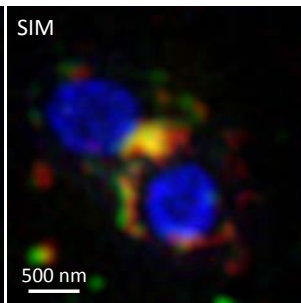
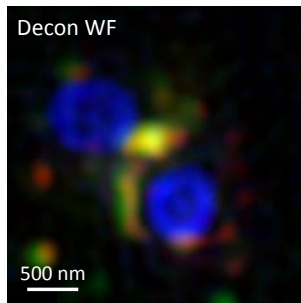
- Bovine Pulmonary Artery Endothelial (BPAE) Cells.
- Alexa Fluor 488 Phalloidin (Actin).
- MitoTracker Red (Mitochondria).



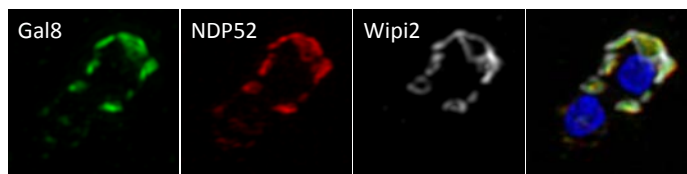
Nick

### 3/4-Colour SIM: Microdomains of Autophagy Markers

- HeLas infected with Salmonella:
- mCherry-Salmonella (Blue).
- Galectin8 (Alexa 488, Green).
- ATG13a (Alexa 647, Red).



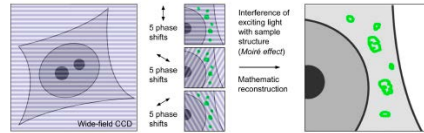
- HeLas infected with Salmonella:
- Galectin8 (Alexa 488, Green).
- NDP52 (Pacific Blue, Red).
- Wipi2 (Alexa 647, White).
- mCherry Salmonella (Blue).



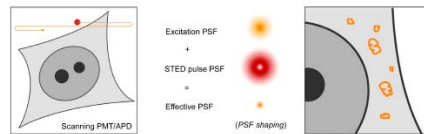
Ágnes Föglein (Randow Lab)

### Super-resolution Microscopy Techniques

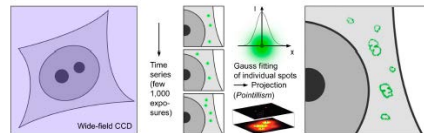
- Structured Illumination Microscopy (SIM). Sample is excited with patterned illumination, which highlights different objects at different times.



- Stimulated Emission Depletion (STED) Microscopy. Targeted PSF engineering effectively shrinks illumination spot.

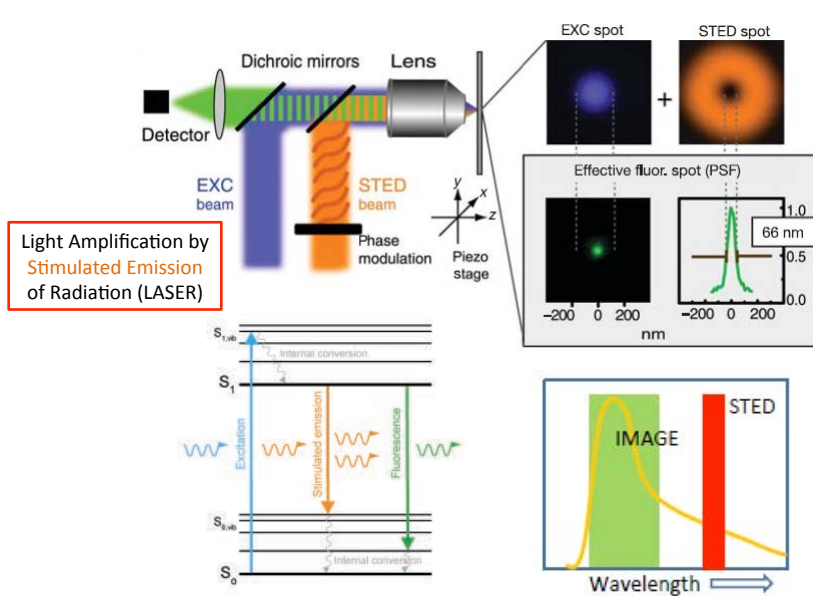


- Localisation Microscopy (LM) e.g. PALM and STORM. Fluorophores are randomly activated, imaged and bleached. Localisation of the fluorophores builds up a super-resolution image over time.



Schermelleh *et al.*, JCB, 2010.

### Stimulated Emission Depletion (STED) Microscopy

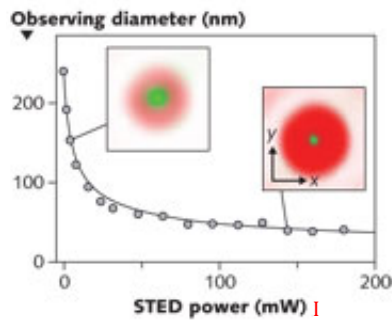


Light Amplification by Stimulated Emission of Radiation (LASER)

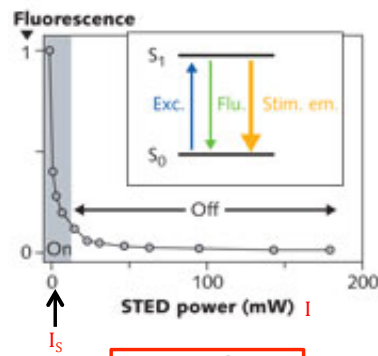
Images from nanobiophotonics.mpibpc.mpg.de and Willig *et al.*, Nature Letters, 2006.

### Stimulated Emission Depletion (STED) Microscopy

- Resolution increases as the intensity of the STED beam is turned up.
- $I$  = STED laser power.
- $I_s$  = Saturation intensity (STED power needed to quench emission by 50% - fluorophore specific).



XY resolution >10 nm (25-80 nm typical)  
Z resolution same as confocal

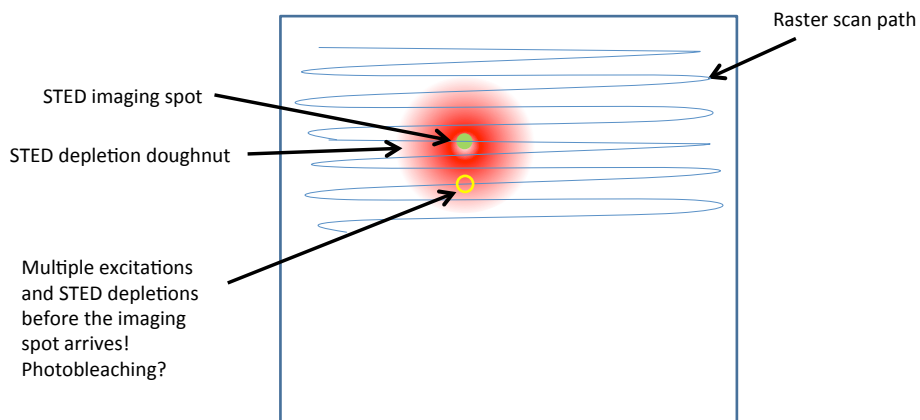


$$d \approx \lambda/2NA\sqrt{1+I/I_s}$$

Image from laserfocusworld.com

### Stimulated Emission Depletion (STED) Microscopy

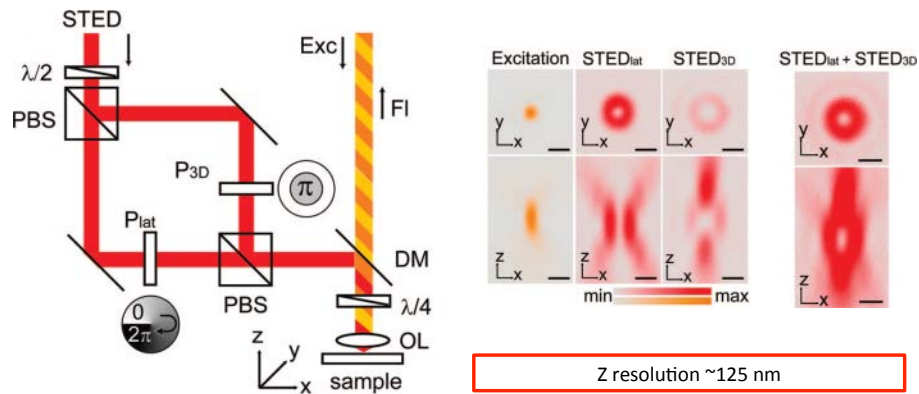
- The STED image is built up by raster scanning the super-resolution central spot. Because it is much smaller than a regular confocal spot the image pixels must also be smaller.





### Improving Axial (Z) Resolution - 3D STED

- With an alternatively shaped STED beam, additional axially-shifted intensity lobes can be created that quench the axial extension of the PSF as well.



Harke *et al.*, Nano Letters, 2008

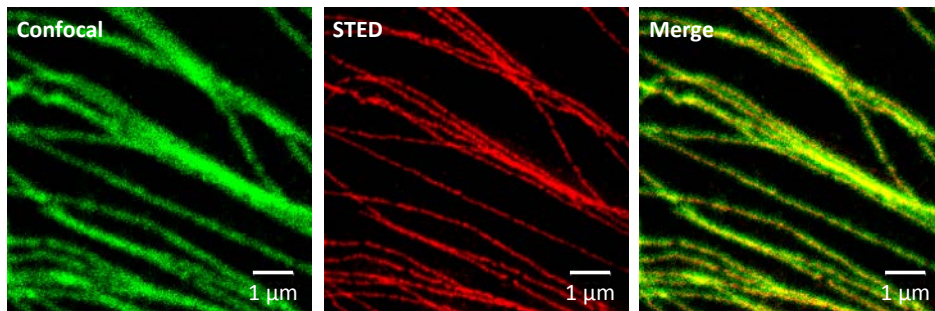
### Leica TCS SP8 STED 3X

- Essentially just a standard Leica TCS SP8 confocal plus a few extra bits:
  - + Tuneable pulsed supercontinuum "white light" laser (470-670 nm).
  - + High power 592 nm, 660 nm and 775 nm STED lasers.
  - + 3D STED alignment unit.
  - + Gated detectors.
- Scan time scales with frame size as with confocal.
- However, pixel density must be higher (20 nm pixels) to capture super-resolution information.
- Therefore, scan time is considerably slower ( $\sim 16$ -fold).
- Resonant scanner.



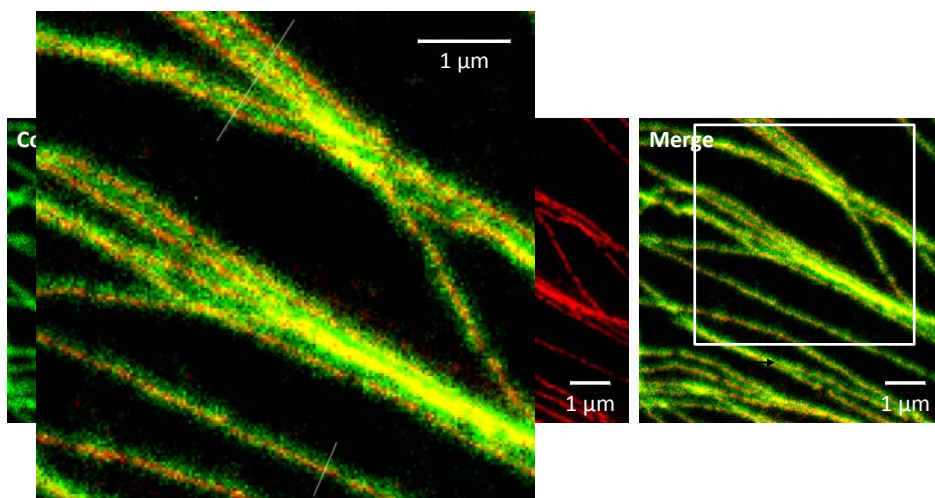
### 1-Colour STED Example (Microtubules)

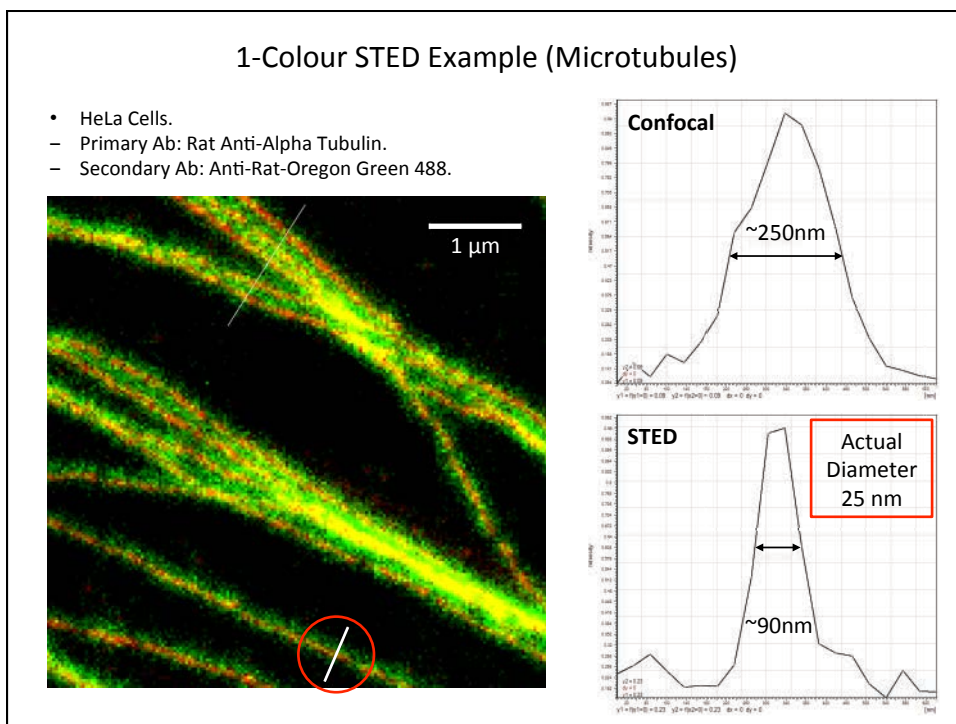
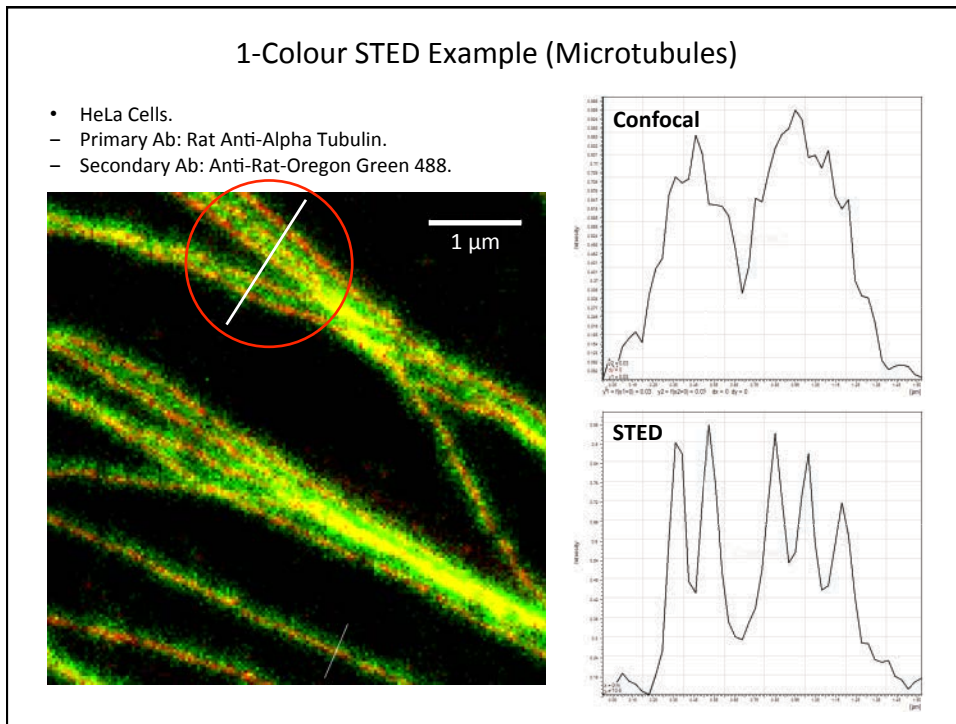
- HeLa Cells.
- Primary Ab: Rat Anti-Alpha Tubulin.
- Secondary Ab: Anti-Rat-Oregon Green 488.



### 1-Colour STED Example (Microtubules)

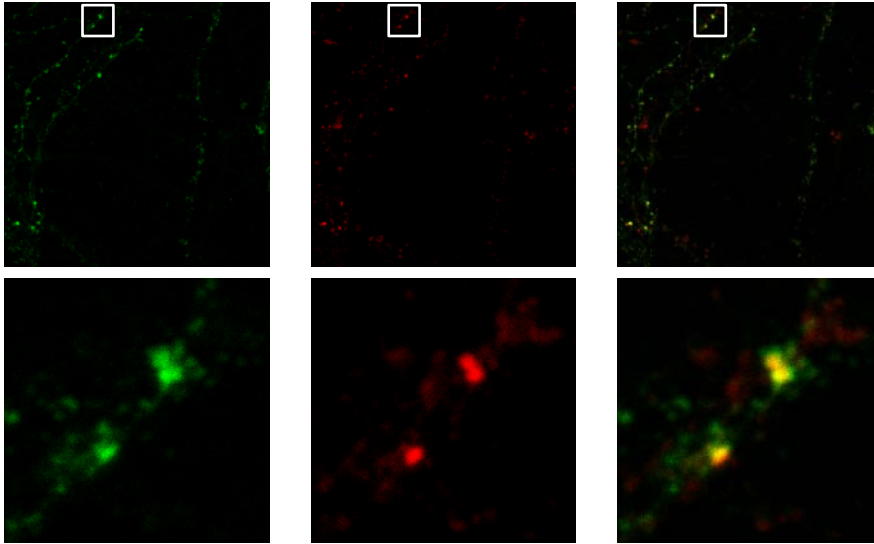
- HeLa Cells.
- Primary Ab: Rat Anti-Alpha Tubulin.
- Secondary Ab: Anti-Rat-Oregon Green 488.





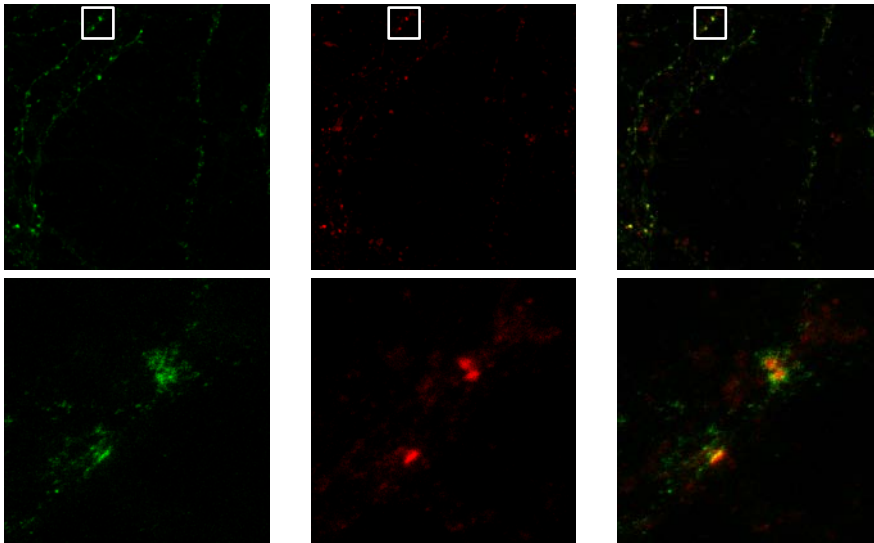
### 2-Colour STED: Example 1 (Primary Neurons)

- Primary Rat Hippocampal Neuron Culture (Jake Watson – Greger lab).
- Primary Abs: Rabbit Anti-GluA1R + Mouse Anti-PSD95.
- Secondary Abs: Anti-Rabbit-Alexa 488 + Anti-Mouse-Alexa 568.



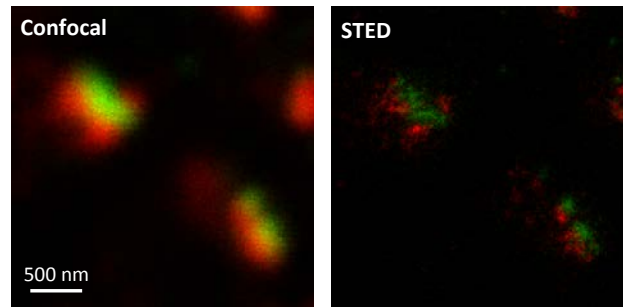
### 2-Colour STED: Example 1 (Primary Neurons)

- Primary Rat Hippocampal Neuron Culture (Jake Watson – Greger lab).
- Primary Abs: Rabbit Anti-GluA1R + Mouse Anti-PSD95.
- Secondary Abs: Anti-Rabbit-Alexa 488 + Anti-Mouse-Alexa 568.



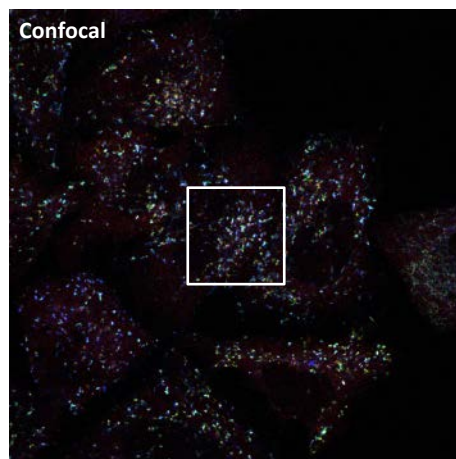
### 2-Colour STED: Example 2 (More Primary Neurons)

- Primary Rat Hippocampal Neuron Culture.
- PSD95 (Alexa 488, Green)
- Bassoon (Alexa 568, Red)

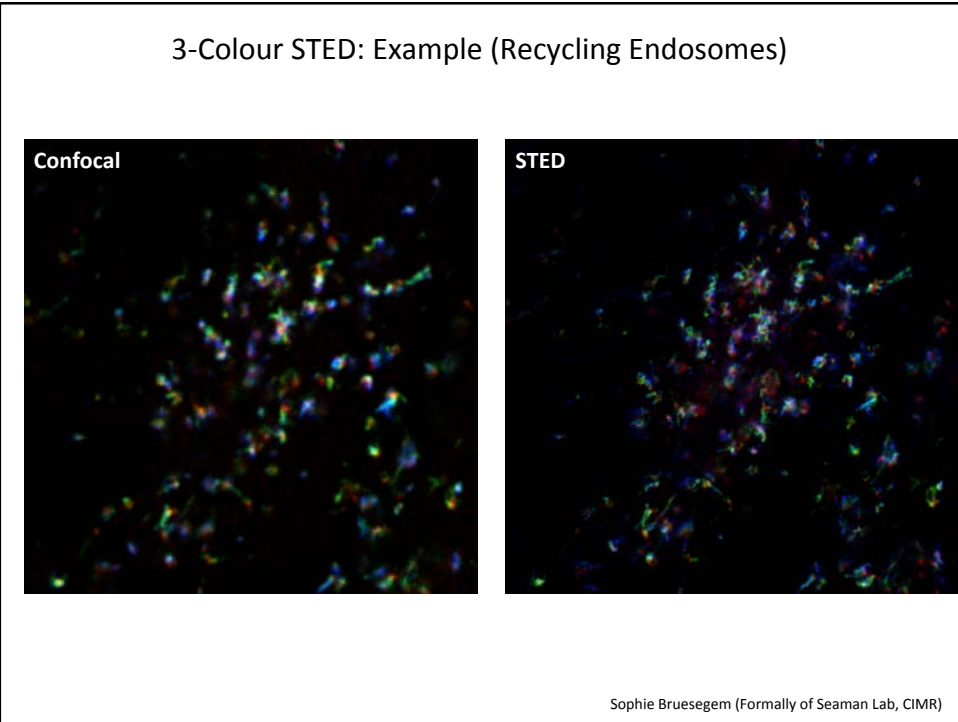


Jake Watson (Greger Lab)

### 3-Colour STED: Example (Recycling Endosomes)

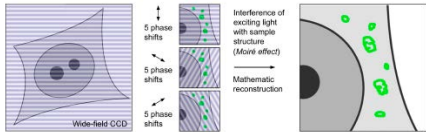


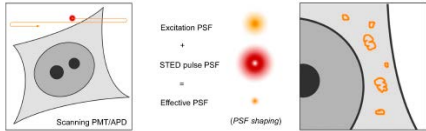
Sophie Bruesegem (Formally of Seaman Lab, CIMR)

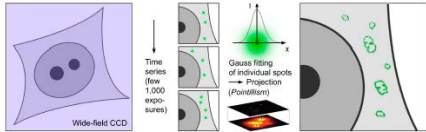


### Super-resolution Microscopy Techniques

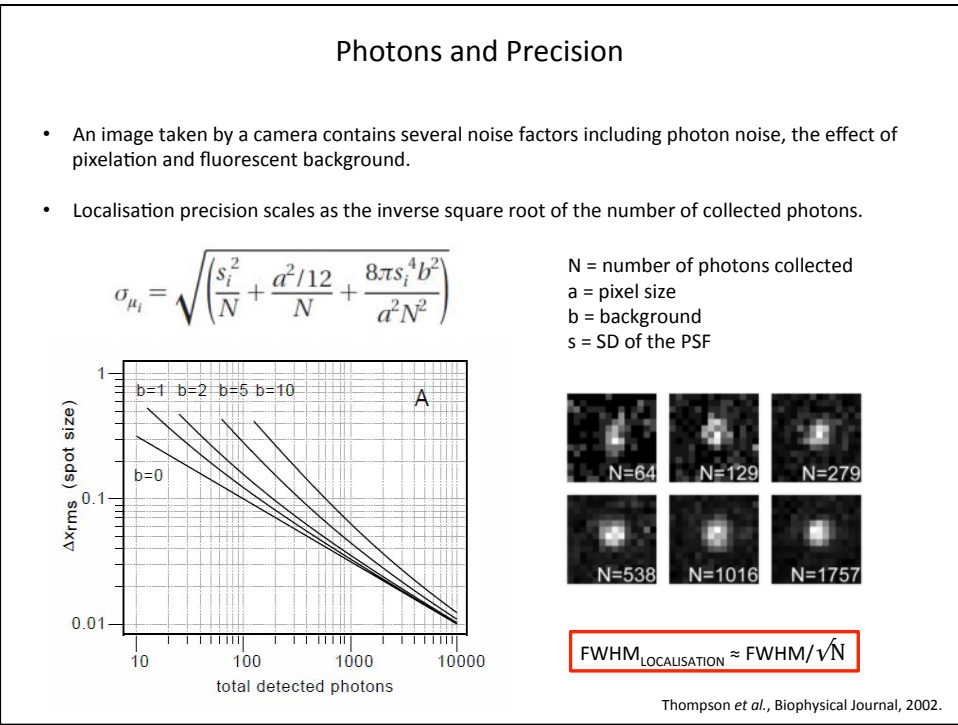
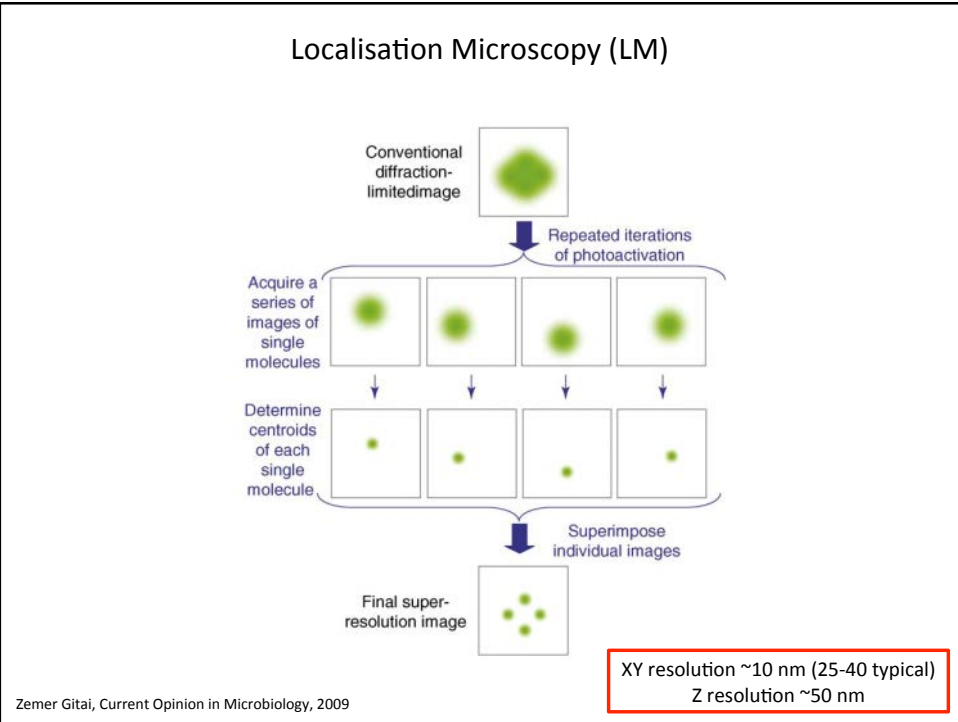
- Structured Illumination Microscopy (SIM).** Sample is excited with patterned illumination, which highlights different objects at different times.

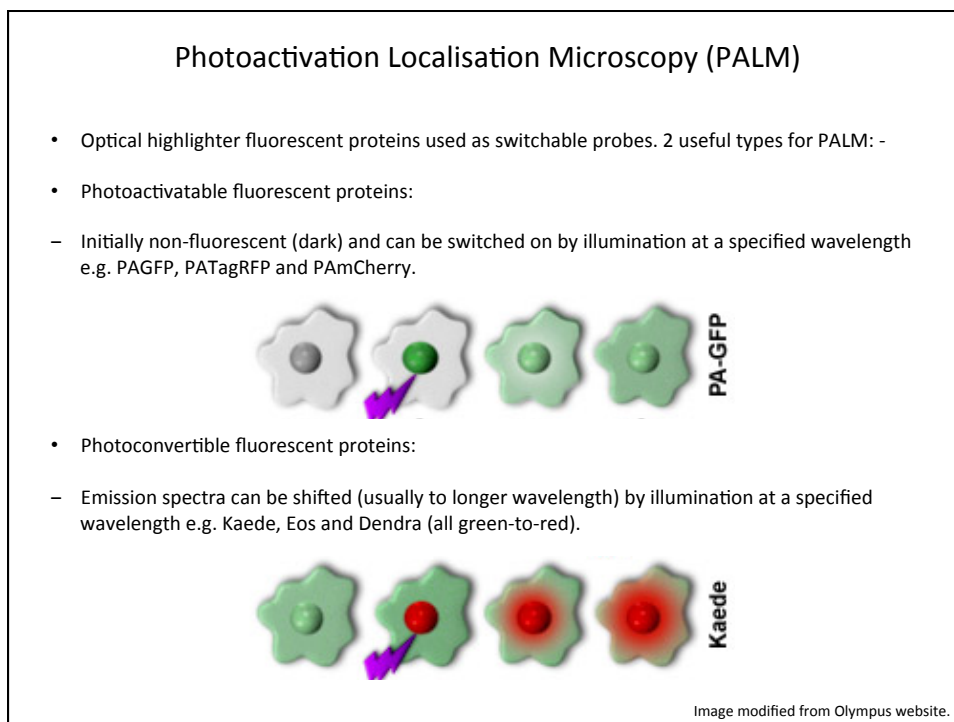
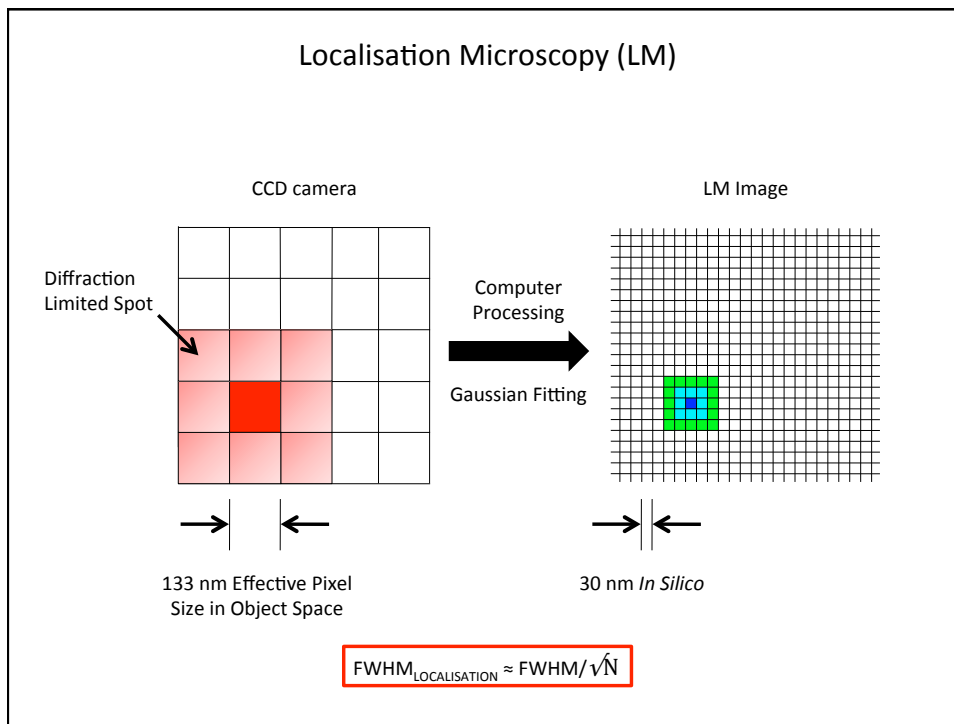

- Stimulated Emission Depletion (STED) Microscopy.** Targeted PSF engineering effectively shrinks illumination spot.


- Localisation Microscopy (LM) e.g. PALM and STORM.** Fluorophores are randomly activated, imaged and bleached. Localisation of the fluorophores builds up a super-resolution image over time.



*Schermelleh et al., JCB, 2010.*

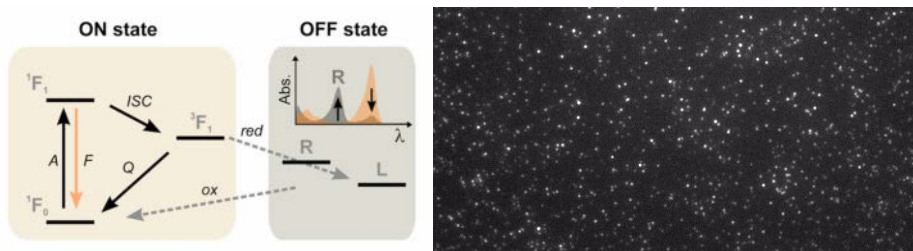






## STochastic Optical Reconstruction Microscopy (STORM)

- A large number of commercially available fluorophores can be used as photoswitches in the presence of millimolar concentrations of reducing thiols e.g.  $\beta$ -ME, MEA or GSH (live cells).
- The triplet state is reduced by the thiol to form a long-lived intermediate radical anion (off state). The fluorescent state of the fluorophore is recovered through oxidation by molecular oxygen, which is facilitated by irradiation with purple/blue light.
- Carbocyanine dyes (Cy5, 5.5, 7, Alexa 647) are far more easily oxidised and therefore an enzymatic oxygen scavenging system is required to prolong lifetime in the off state (glucose oxidase and catalase).



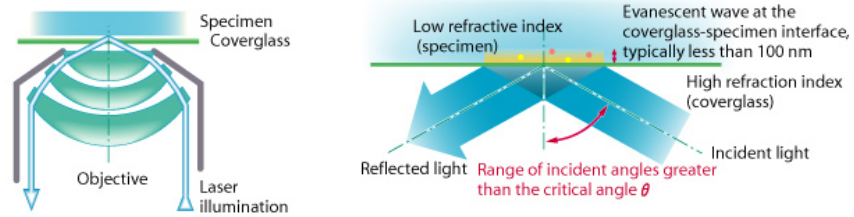
Van de Linde *et al.*, Chem. Biol., 2013

## Nikon N-STORM

- TIRF illuminator attached to a Nikon Ti inverted microscope body.
- 4 lasers (30 mW 405 nm, 90 mW 488 nm, 90 mW 561 nm, 170 mW 647 nm).
- 100x 1.49 NA TIRF objective.
- 60x 1.27 NA water objective.
- Andor iXon3 897 EMCCD camera capable of up to 35 fps.
- Perfect Focus System (PFS) to reduce Z-drift during acquisitions, which can take up to 1 hour.
- XY-drift correction in software by cross-correlation.
- Cylindrical lens in detection path allows 3D position mapping over 1  $\mu$ m range.



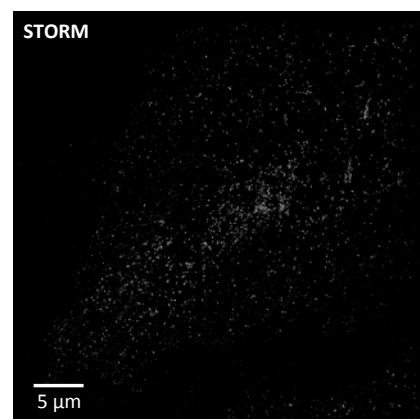
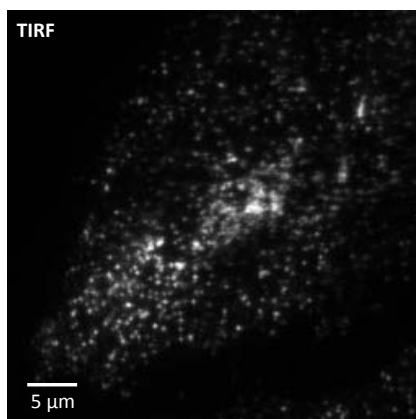
## Total Internal Reflection Fluorescence (TIRF) Microscopy



TIRFM Image from Nikon website.

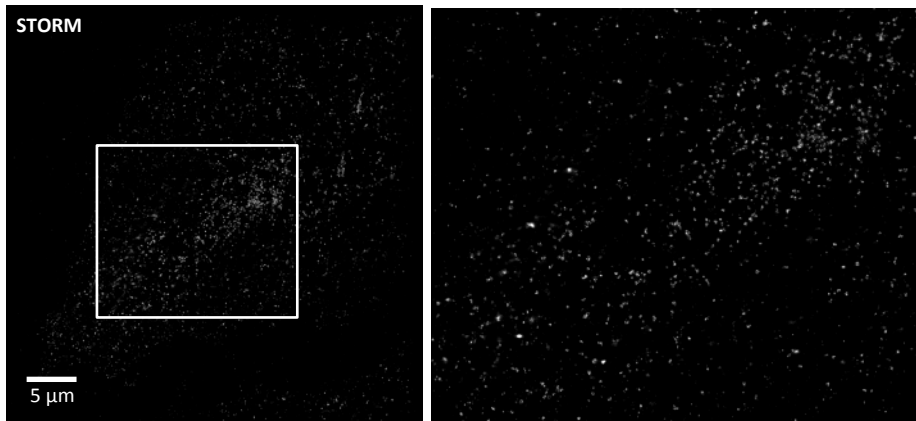
## 1-Colour STORM: Example 1 (Caveolae)

- HeLa Cells.
- Primary Ab: Rabbit Anti-Cavin1.
- Secondary Ab: Anti-Rabbit-Alexa Fluor 647.



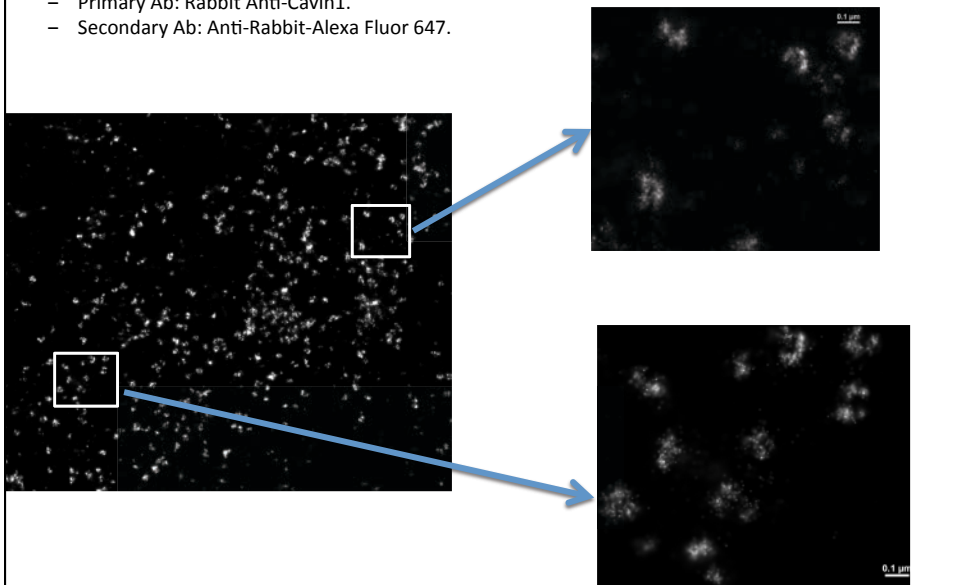
### 1-Colour STORM: Example 1 (Caveolae)

- HeLa Cells.
- Primary Ab: Rabbit Anti-Cavin1.
- Secondary Ab: Anti-Rabbit-Alexa Fluor 647.



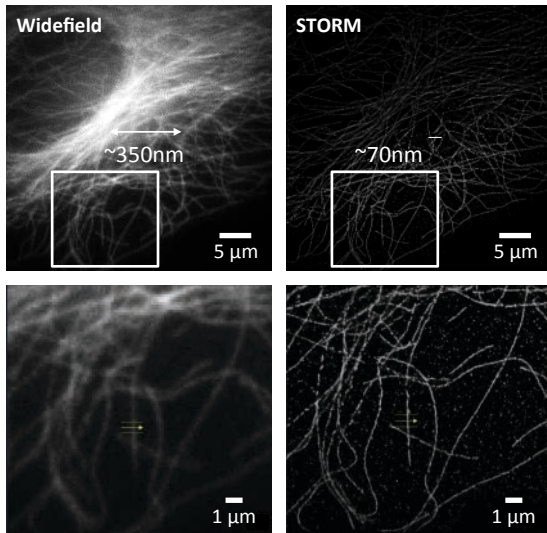
### 1-Colour STORM: Example 1 (Caveolae)

- HeLa Cells.
- Primary Ab: Rabbit Anti-Cavin1.
- Secondary Ab: Anti-Rabbit-Alexa Fluor 647.



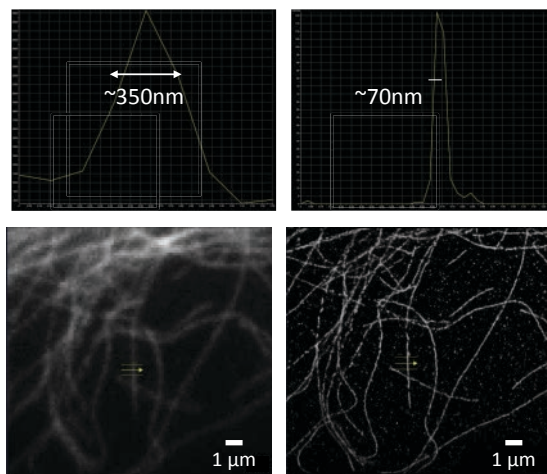
### 1-Colour STORM: Example 2 (Microtubules)

- HeLa Cells.
- Primary Ab: Rat Anti-Alpha Tubulin.
- Secondary Ab: Anti-Rat-Alexa Fluor 647.



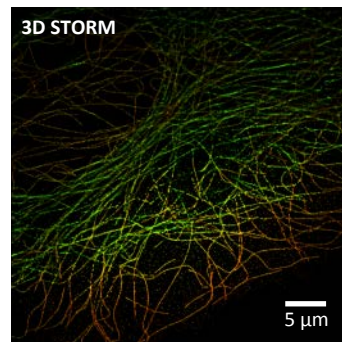
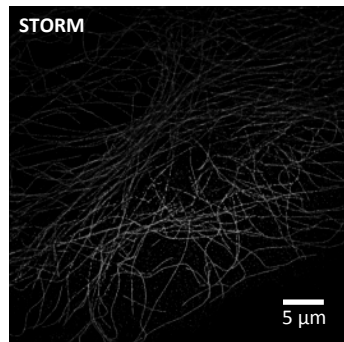
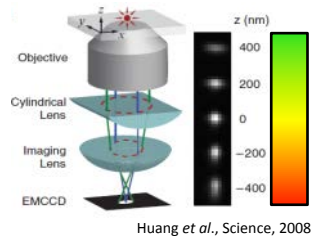
### 1-Colour STORM: Example 2 (Microtubules)

- HeLa Cells.
- Primary Ab: Rat Anti-Alpha Tubulin.
- Secondary Ab: Anti-Rat-Alexa Fluor 647.



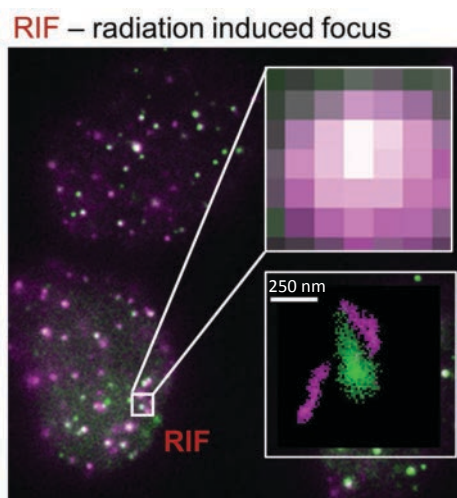
### 1-Colour STORM: Example 2 (Microtubules)

- HeLa Cells.
- Primary Ab: Rat Anti-Alpha Tubulin.
- Secondary Ab: Anti-Rat-Alexa Fluor 647.



### 2-Colour STORM Example (Radiation-Induced Damage)

- HeLa cells
- RPA (CF 568, Green).
- Rad51 (Alexa 647, Magenta).



Kalina Haas ( Formerly of Venkitaraman Lab, MRC Cancer Unit)

### Label Size and Labelling Density.

- Photon number limits the precision of single molecule localisation and signal-to-noise for all super-resolution techniques.
- The resolution of the final image also depends on labelling density.
- The physical size of the label can limit the achievable resolution.
- Ideally, we would like to label proteins with the specificity of a genetic fusion but with the signal intensity of organic fluorophores!

### Comparison of Super-resolution Methods

	SIM	STED	LM
<b>Detector</b>	Wide-field EMCCD/ sCMOS camera	Scanning PMT/APD	Wide-field EMCCD/ sCMOS camera
<b>Lateral (XY) Resolution (nm)</b>	100-130	25-80	25-40
<b>Axial (Z) Resolution (nm)</b>	250-350	125	50
<b>Temporal Resolution</b>	ms-sec	ms-min	s-min
<b>Multiplexing</b>	4 colours, regular fluorophores	3 colours, restricted by number of STED lasers	2/3 colours, not trivial
<b>Postprocessing</b>	Yes, 9-25 raw images per z-plane, risk of artefacts	No	Yes, 1000+ images per z-plane

- Always image through no. 1.5 (170  $\mu\text{m}$ ) cover glasses, ideally low-tolerance ( $\pm 5 \mu\text{m}$ ).
- If possible use phenol red-free culture medium.
- Use high refractive index mounting media e.g. Prolong Diamond or 2,2'-thiodiethanol (TDE). Ideally with antifade compounds to limit bleaching.
- If immunostaining, consider increasing antibody concentrations to ensure high labelling density. Also, increase number and duration of washes to reduce non-specific labelling.

## Acknowledgements

- Light Microscopy Facility
  - Nick Barry
  - Jérôme Boulanger
  - Ben Sutcliffe
  - James Manton
- Ágnes Föglein (Formally of Randow Lab).
- Jake Watson (Greger Lab).
- Sophie Bruesegem (Formally of Seaman Lab, CIMR)
- Kalina Haas (Formally of Venkitaraman Lab, MRC Cancer Unit)

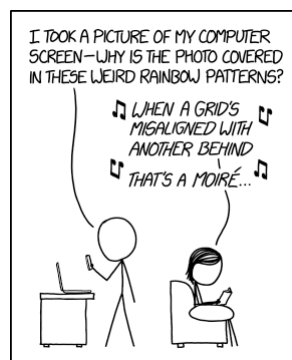


Image from xkcd.com